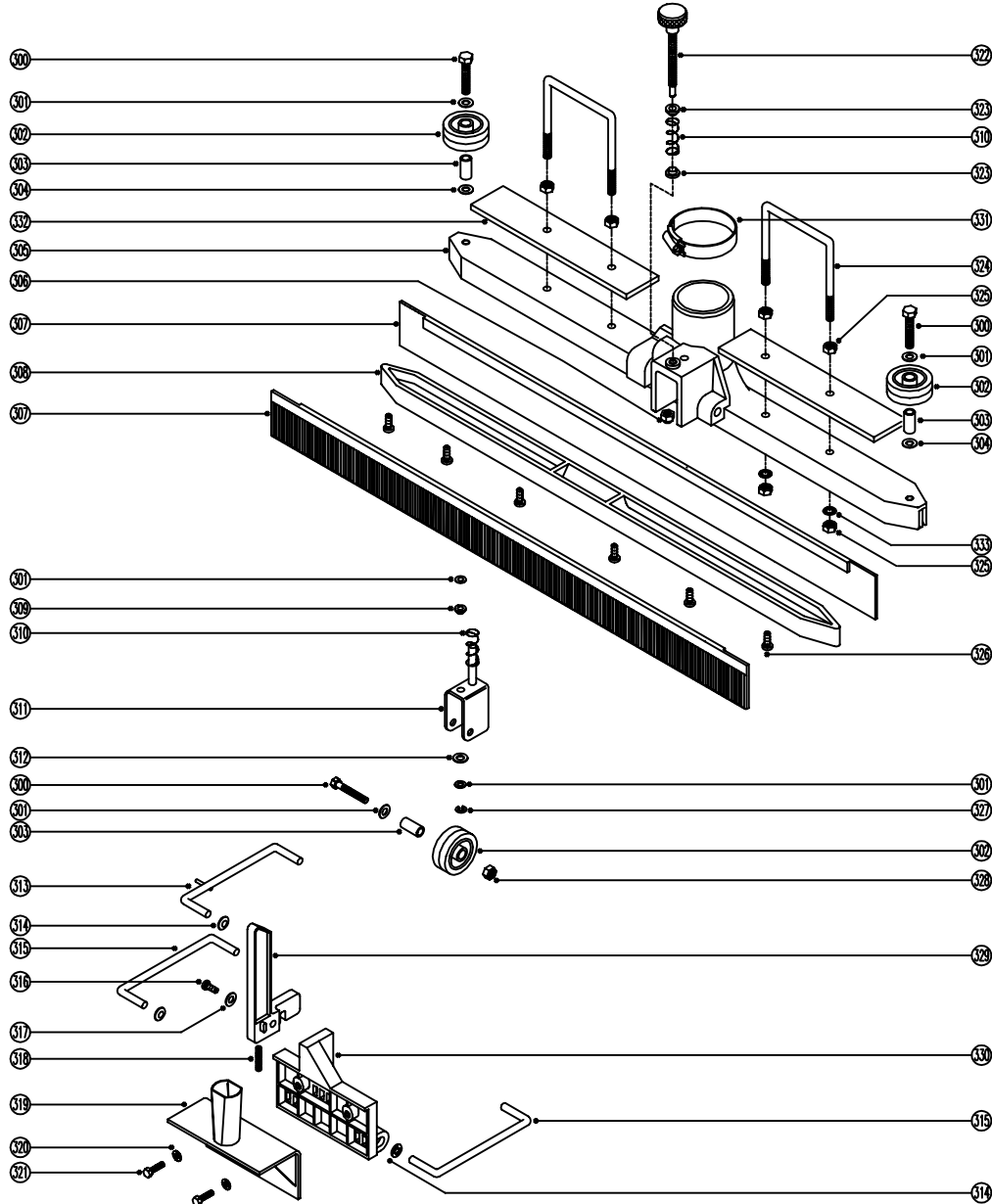




Spare Parts

Model No. TT345 & TTB345 FIXED FLOOR TOOL

Numatic, International, Chard, Somerset, TA20 2GB. 231082
 Tel: 01460 68480 Fax: 01460 68560 DRAWING:EXP181 ISS:A09
 Sales - Tel: 01460 68600 Fax: 01460 68458 04/04/00



MODEL No. TT345 & TTB345 FIXED FLOOR TOOL

SUB ASSEMBLIES

FLOOR TOOL ASSEMBLY - COMPLETE

PART No	DESCRIPTION (ITEMS 300 TO 333)
303267	Floor Tool Assembly (Mains Twintec's)(Delete Item 332)
303348	Floor Tool Assembly (Battery Twintec's)

SPARE PARTS

POS.	PART No	DESCRIPTION
300	21965V	M6 x 40mm Long Hex Head Set Screw
301	219007	M6 Form B Washer
302	215006	51mm Diameter Black & Grey Wheel
303	204023	24mm Long Wheel Insert
304	219008	M6 Form 'G' Steel Washer
305	214026	Main Body Moulding
306	219078	M8 Stiffnut
307	217213	Rubber Blade 710mm Long
308	215015	Blade Clamp
309	208008	Shouldered Bush
310	219312	Compression Spring
311	414032	Wheel Bracket

POS.	PART No	DESCRIPTION
312	219010	M8 Form A Washer
313	429008	Link Rod & Welded Pin
314	219403	8mm Starlock Washer & Cap
315	429007	Link Rod
316	219105	No8 x 5/8" Long Plastite Screw
317	219005	M5 Form G Steel Washer
318	219530	Compression Spring
319	429009	Pivot Bracket
320	219544	M6 Shakeproof Washer
321	219455	M6 x 20mm Long Hex Head Set Screw
322	314004	Adjusting Screw
323	219417	Insulator Bush
324	216134	Floor Tool Handle
325	219079	M8 Plain Nut
326	219370	No8 x 5/8"Plastite Pan Head Pozzi-Drive S/S Screw
327	219272	"E" Type Circlip/6mm
328	219088	M6 Stiffnut
329	206283	Securing Arm
330	215019	Moulded Bracket
331	219529	Stainless Steel Hose Clamp
332	403349	0.5Kg Fixed Floor Tool
333	219018	M8 Shakeproof Washer