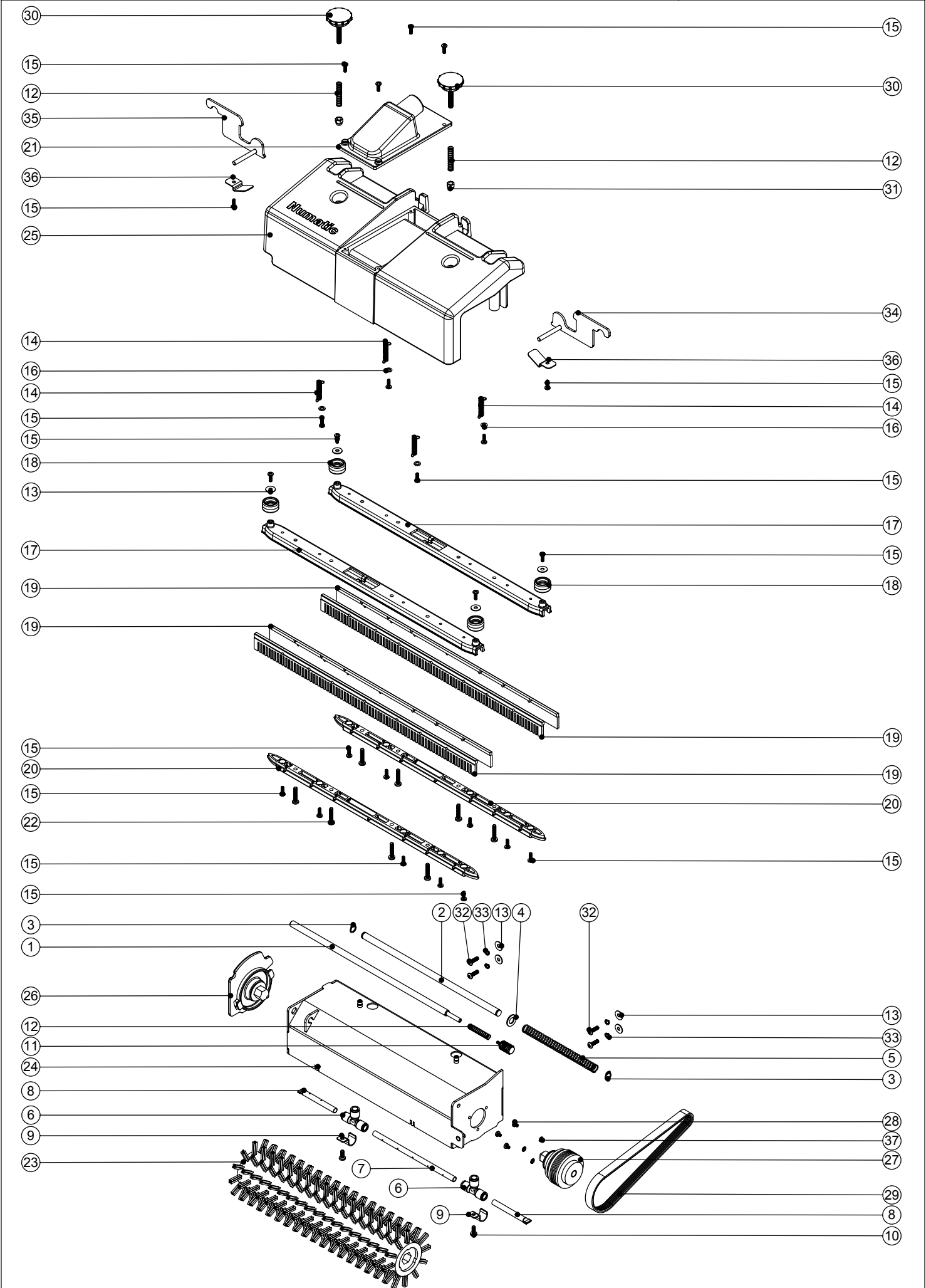


Numatic International Spare Parts

Model No: TTQ1535 BRUSH & HOUSING ASSEMBLY

234091
DRAWING: EXP-0522 ISS:A04
30/11/2004



Numatic International Spare Parts

Model No: TTQ1535 BRUSH & HOUSING ASSEMBLY

POS:	ITEM NO:	DESCRIPTION:	COMMENTS:
1	206526	LOCKING BAR	
2	206532	COVER PIN	
3	219586	10MM EXTERNAL CIRCLIP	
4	219449	M10 FORM A WASHER	
5	219731	COMPRESSION SPRING	
6	216259	EQUAL TEE 8MM	
7	303537	SPRAY BAR MIDDLE	
8	303538	SPRAY BAR END	
9	329281	SPRAY BAR CLIP	
10	219740	M5 X 12MM LONG STAINLESS STEEL POZI PAN SCREW	
11	219738	M4 KNOB	
12	219732	COMPRESSION SPRING	
13	219644	M5 FORM G STAINLESS STEEL WASHER	
14	219734	EXPANSION SPRING	
15	219569	No8 X 1/2 INCH LONG POZI PAN STAINLESS STEEL TAPTITE SCREW	
16	219355	M5 FORM A STAINLESS STEEL WASHER	
17	227386	TOP PIECE MOULDING	
18	229389	BUFFER WHEEL	
19	217348	BLADE	
20	227387	BOTTOM PIECE MOULDING	
21	227385	AIR TUBE MOULDING	
22	219575	M5 X 25MM LONG POZI PAN STAINLESS STEEL SCREW	
23	606225	0.5MM NYLON BRISTLE SCRUB BRUSH	
24	303559	BRUSH COVER WELD ASSEMBLY	
25	318998	PRINTED BRUSH COVER MOULDING	
26	329279	END COVER MOULDING ASSEMBLY	
27	329286	DRIVE END ASSEMBLY	
28	219697	M4 X 8MM LONG POZI PAN STAINLESS STEEL SCREW	
29	217352	POLYVEE DRIVE BELT	
30	206661	HEIGHT ADJUSTMENT KNOB	
31	219764	M6 STAINLESS STEEL DOME NUT	
32	219785	M5 X 16MM LONG BUTTON HEAD STAINLESS STEEL SCREW	
33	219648	M5 SINGLE COIL WASHER	
34	329992	RIGHT HAND LIFTING LEVER ASSEMBLY	
35	329993	LEFT HAND LIFTING LEVER ASSEMBLY	
36	329291	LEVER PIN BRACKET	
37	219015	M4 SHAKEPROOF WASHER	