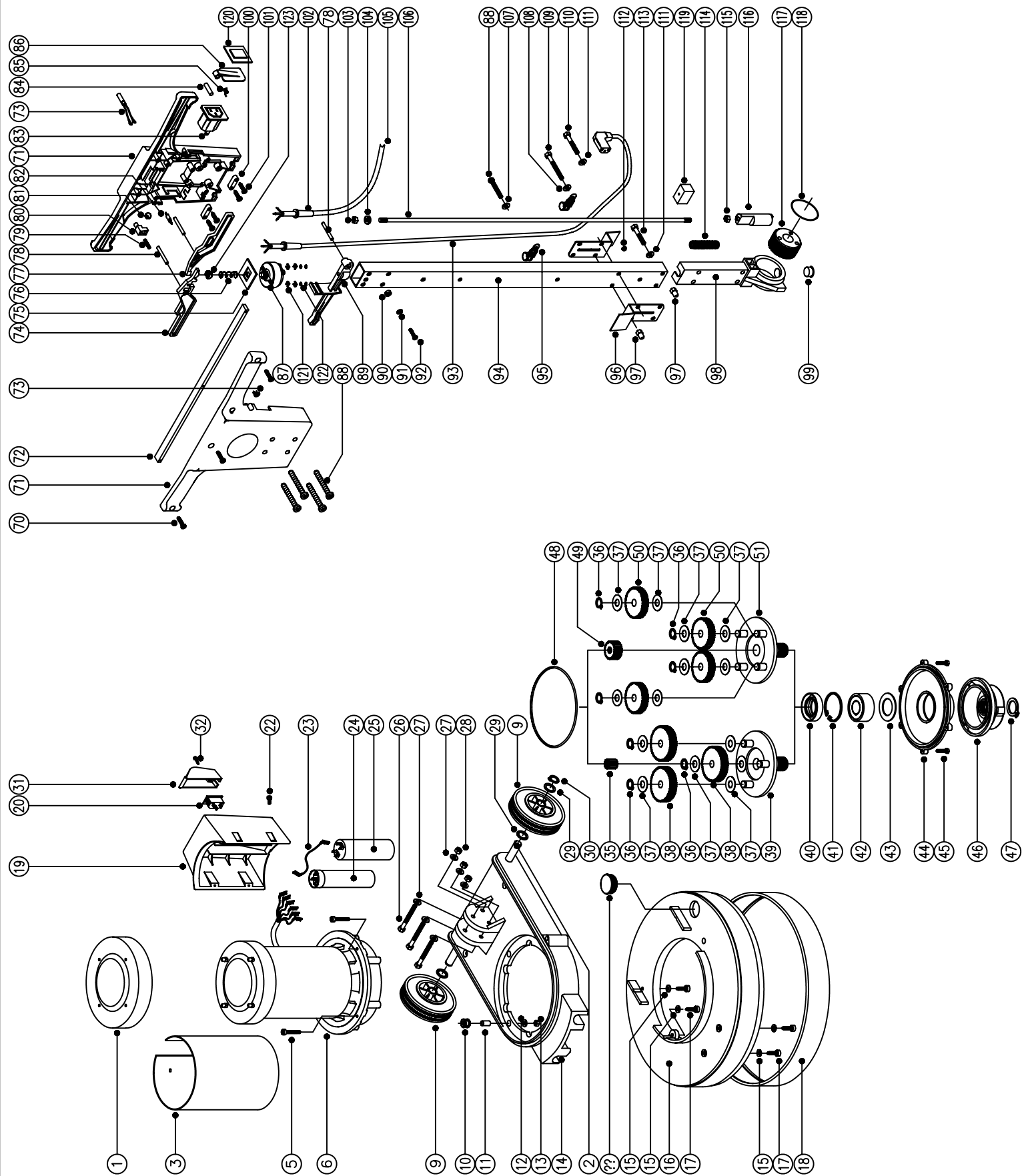




Spare Parts

Model No. BMD-1000/1200 S/M/H FLOOR MACHINE

Numatic, International, Chard, Somerset, TA20 2GB. 234132
 Tel: 01460 68480 Fax: 01460 68560 DRAWING:EXP-0563 ISS:A05
 Sales - Tel: 01460 68600 Fax: 01460 68458 05/07/2006



MODEL No. BMD-1000/1200 S/M/H FLOOR MACHINE

SPARE PARTS

POS.	PART No	DESCRIPTION
1	429020	Black Motor Cap Spinning
2	206055	Axle
3	404004	Motor Shroud (Painted Silver) (1000W Motors)
4	404008	Motor Shroud (Painted Silver) (1200W Motors)
5	229400	Black End Stop
6	219268	M6 x 35mm Pozi Pan Screw
	205002	120V/60Hz Motor (1200W)
	205003	240V/50Hz Motor (1000W)
	205004	240V/50Hz Motor (1200W)
	205011	110V/50Hz Motor (1000W)
7		
8		
9	229060	Grey Wheel With Black Hub
10	229025	Grommet
11	229023	Spirol Spacer
12	219008	M6 Form G Steel Washer
13	219088	M6 Stiffnut
14	229177	Base Moulding (Black)
15	219005	M5 Form G Steel Washer
16	329317	450mm Diameter Brush Deck (Grey)
	229306	400mm Diameter Brush Deck (Grey)
17	219369	No8 x 1" Plastite Screw
18	206475	450mm Diameter Dark Grey Buffer
	206479	400mm Diameter Dark Grey Buffer
19	229141	Capacitor Box
20	220584	Clip In Plug
21		
22	219095	M4 x 6mm Long Taptite Screw
23	220119	Brown Link Wire
24	220022	Motor Start Capacitor (100 MFD)
	220090	Motor Start Capacitor (480 MFD)
	220117	Motor Start Capacitor (150 MFD)
25	220024	Motor Run Capacitor (10 MFD)
	220103	Motor Run Capacitor (40 MFD)
	220104	Motor Run Capacitor (16 MFD)
26	219213	M8 x 70mm Long Bolt
27	219010	M8 Steel Washer
28	219078	M8 Stiffnut
29	219219	M16 Wave Washer
30	229051	Circlip
31	229213	Capacitor Box Plug Cover
32	219107	No6 x 5/8" Plastite Screw
35	230027	12 Tooth Pinion (50&60Hz Standard Speed)
	230025	20 Tooth Pinion (50Hz Medium/60Hz High)
36	230015	15mm External Circlip
37	230215	Aluminium Washer
38	230013	48 Tooth Spur Gear (50&60Hz Standard Speed)
	230026	44 Tooth Spur Gear (50Hz Medium/60Hz High)
39	230291	Planet Carrier (50&60Hz Standard Speed)
	230292	Planet Carrier (50Hz Medium/60Hz High)
40	230069	10mm Double Lip Oil Seal
41	230200	62mm Internal Circlip
42	230094	62mm O/D x 30mm I/D x 20mm Bearing (With Seals)
43	219261	Black ABS Washer
44	230208	Bottom Plate Assembly+Items:40/41/42/43)
45	219051	M5 x 16mm Long Screw
46	230207	Die Cast Chuck
47	230048	26mm External Circlip
48	230001	V - Oil Seal
49	230028	24 Tooth Pinion (50Hz High Speed)
	230014	42 Tooth Spur Gear (50Hz High Speed)

POS.	PART No	DESCRIPTION
51	230294	Planet Carrier (50Hz High Speed)
70	219212	M3.5 x 10mm Long Taptite Screw
71	229017	Handle Moulding
	229999	Handle Moulding (Pair)
72	229076	Support Strip
73	320074	240V Neon Indicator & Lens
	320075	110V Neon Indicator & Lens
74	229001	Right Hand Lever
75	229011	Switch Plate
76	229028	Switch Spring
77	229000	Left Hand Lever
78	229071	Lever Mounting Pin
79	219323	Spring
80	229066	Release Button
81	229050	12mm Stainless Steel Ball
82	229033	Blanking Pin
83	229018	Power Take Off Socket
84	229035	Pivot Pin
85	229034	Torsion Spring
86	229032	Flap
87	229448	Switch
88	219045	M5 x 16mm Long Sems Screw
89	229003	Adjustment Lever
90	219153	Brass Cup Washer
91	219003	M5 Form A Steel Washer
92	219047	M5 x 10mm Long Sems Screw
93	229249	Secondary Cable
	220685	Secondary Cable (110V CSA Machines)
94	429044	Handle
95	229139	"P" Clip
96	304172	Mounting Bracket
97	219080	M6 Dornnut
98	229081	Handle Casting
99	229099	Hole Plug
100	227008	Cable Clamp
101	219107	No6 x 5/8" Plastite Screw
102	220015	Stress Relief
103	219088	M6 Stiffnut
104	219017	M6 Double Coil Spring Washer
105	236088	Mains Cable (UK Plug)
	236089	Mains Cable (Euro Plug)
	220910	Mains Cable (16 Amp Industrial Plug)
	236091	Mains Cable (CSA Plug)
	236094	Mains Cable (Swiss Plug)
	236093	Mains Cable (Australian Plug)
	236095	Mains Cable (15 Amp Plug)
106	229355	Locking Rod
107	219005	M5 Form G Steel Washer
108	219008	M6 Form G Steel Washer
109	219230	M6 x 45mm Long Bolt
110	21965V	M6 x 40mm Long Bolt
111	219007	M6 Form B Steel Washer
112	229009	Hole Blanking Plug
113	219064	M6 x 35mm Long Bolt
114	229138	Spring
115	219099	M6 Halfnut
116	229073	Gear Locking Pin
117	229074	Adjustment Gear
118	219254	"O" Ring
119	229030	Anti-Vibration Pad
120	229026	Socket Blanking Plate (None PTO Socket Machines)
121	329345	Switch Terminal Connector
122	219015	M4 Shakeproof Washer
123	219818	Moulded Washer