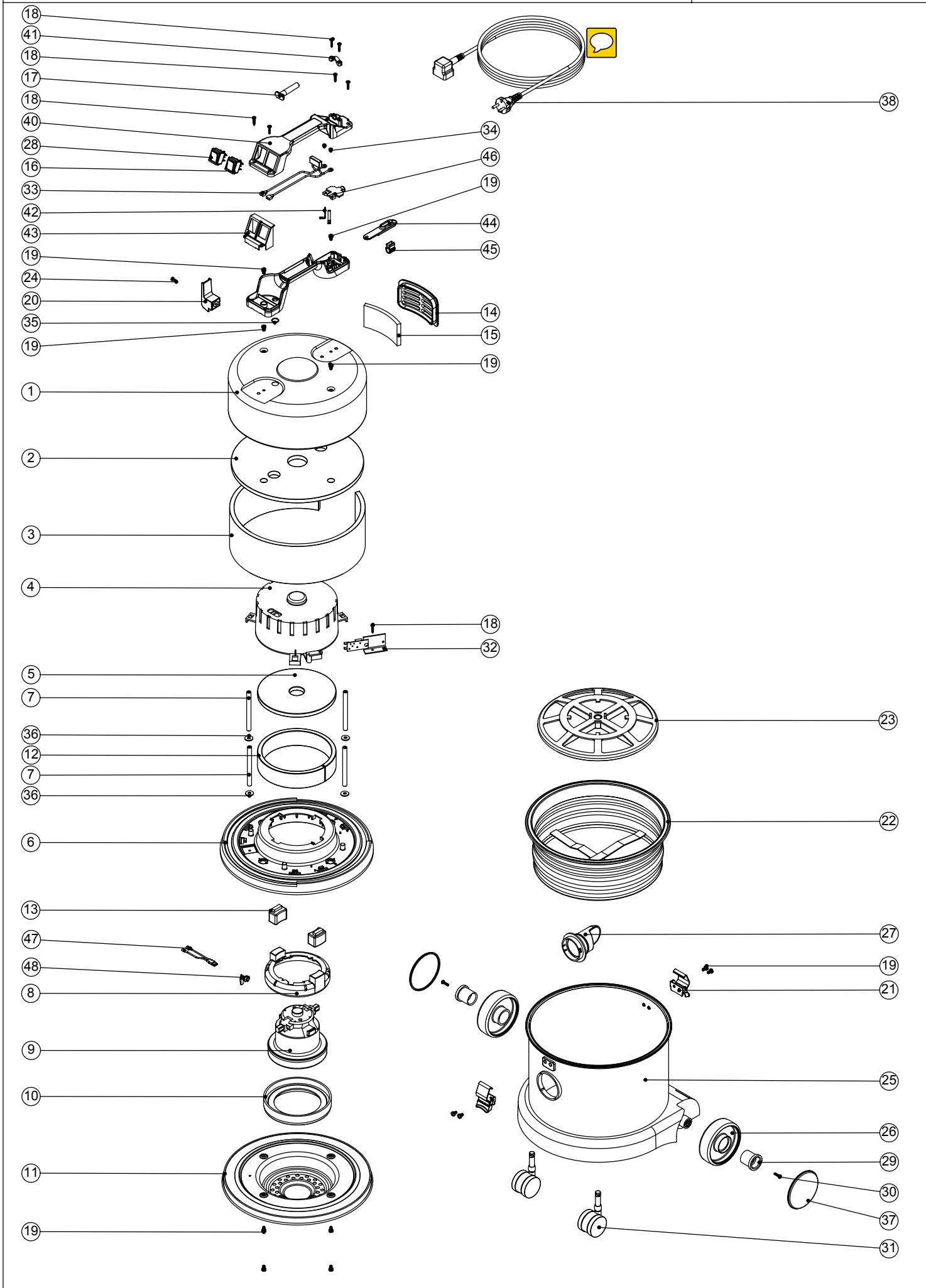


# Numatic International Spare Parts

Model No: NVQ370-22 (2 WIRE)

231452  
DRAWING: EXP-0238 ISS:A10  
10/06/2004



# Numatic International Spare Parts

Model No: NVQ370-22 (2 WIRE)

POS:	ITEM NO:	DESCRIPTION:	COMMENTS:
1	401194	BLACK HEAD TOP	
2	203005	TOP FELT	
3	203009	SIDE FELT INSULATION	
4	229149	NOISE REDUCTION POD	
5	203007	FELT DISC	
6	225127	TOP MOTOR HOUSING	
7	208009	102.5MM LONG ALUMINIUM SPACER	
8	206420	ES MOTOR SPACER (BLACK)	
9	205070	230V MOTOR	
10	202065	BOTTOM MOTOR GASKET	
11	401346	BLACK BOTTOM MOTOR HOUSING	
12	203018	SIDE FELT	
13	202087	TOP MOUNTING RUBBER	
14	225064	OUTLET GRILL	
15	206260	AIR DIFFUSER PAD	
16	220552	RED ROCKER SWITCH	
17	220132	STRESS RELIEF SLEEVE	
18	219107	No6 X 5/8 INCH LONG POZI PAN PLASTITE SCREW	
19	219047	M5 X 10MM LONG POZI PAN SEMS SCREW	
20	206006	CABLE REELING HOOK	
21	206038	TOGGLE	
22	207102	WHITE FILTER ASSEMBLY	
23	209050	SINGLE FILTER GRID	
24	221151	M4 X 12MM LONG POZI PAN SCREW	
25	325520	PROCESSED RED DRUM + INSERTS	
	325521	PROCESSED BLUE DRUM + INSERTS	
	325522	PROCESSED GREEN DRUM + INSERTS	
	325523	PROCESSED YELLOW DRUM + INSERTS	
26	227640	2 SHOT WHEEL ASSEMBLY	
27	227363	BAG CONNECTOR	
28	220243	BLACK/GREEN ROCKER SWITCH	
29	227868	WHEEL HUB FOR 2 SHOT WHEEL	
30	219105	No8 X 5/8 INCH LONG POZI PAN PLASTITE SCREW	
31	204111	50MM TWIN WHEEL CASTOR WITH PU TYRE	
32	220285	230V SPEED CONTROL (TRIAC)	
33	220142	SUPPRESSOR ASSEMBLY	
34	219090	M4 X 8MM LONG POZI PAN SEMS SCREW	
35	219363	O-RING	
36	219008	M6 FORM G WASHER	
37	227638	BLACK PLAIN TRIM	
38	220953	8.4M X 1.00MM X 2 CORE NUCABLE (EURO PLUG)	
	220945	8.4MT X 1.00MM X 2 CORE NUCABLE( UK PLUG)	
	236017	10.0MT X 1.00MM X 2 CORE NUCABLE (SWISS PLUG)	
40	227624	HANDLE COVER 10AMP 2 POLE 2 SWITCH	
39	320686	HANDLE BASE MOULDING	
41	227564	PLUG LOCATION CLAMP	
42	206562	CONTACT PIN	
43	227629	SWITCH MOUNTING BRACKET	
44	227636	STRAIN RELIEF	
45	227637	CABLE CLIP	
46	227632	TERMINAL COVER & CLAMP	
47	220929	BIMETALIC OVERLOAD ASSEMBLY	
48	206490	OVERLOAD CLIP	

