

Raccoon 2



**CATALOGO PARTI DI RICAMBIO
PARTS MANUAL
MANUEL DES PIECES DE RECHANGE
ERSATZTEILKATALOG
MANUAL DE REPUESTOS**



**DEC S.p.A.
Via Caduti sul Lavoro 20
41100 Modena – ITALIA
Tel. ++39 059 373222
Tel. ++39 059 280010
Fax ++39 059 374199
E-mail: dec@sincretech.it**



INDICE
INDEX
INDEXE
VERZEICHNIS
INDICE

Raccoon 2

1-2



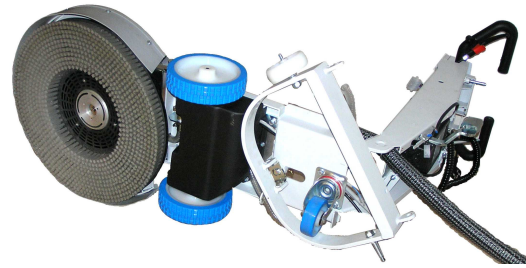
3



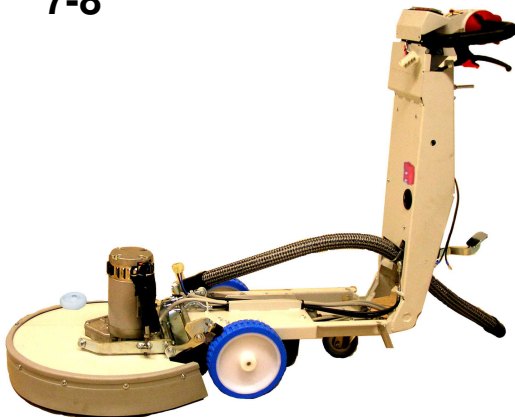
4-5



6



7-8



9-10-11

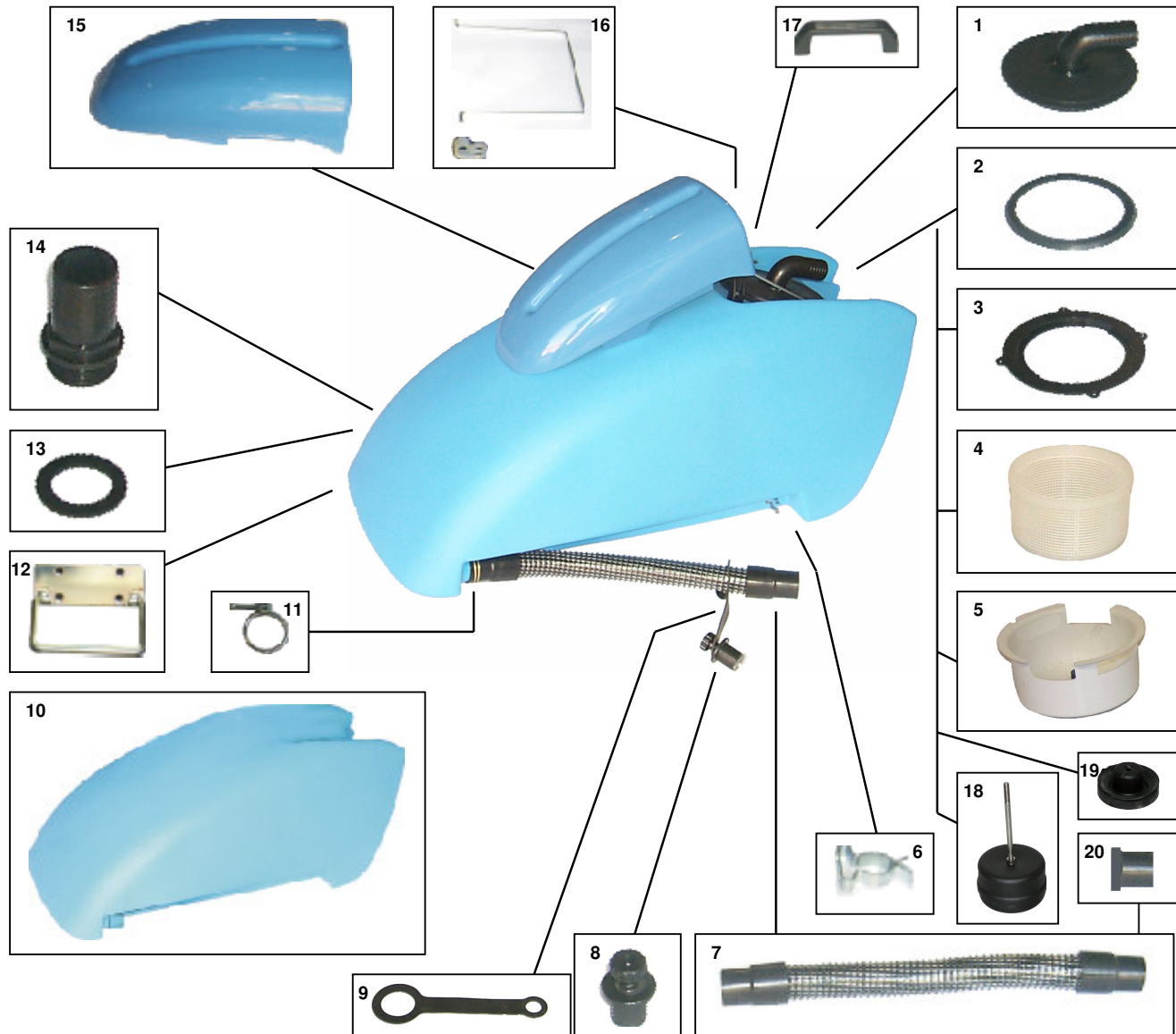




Raccoon 2



1

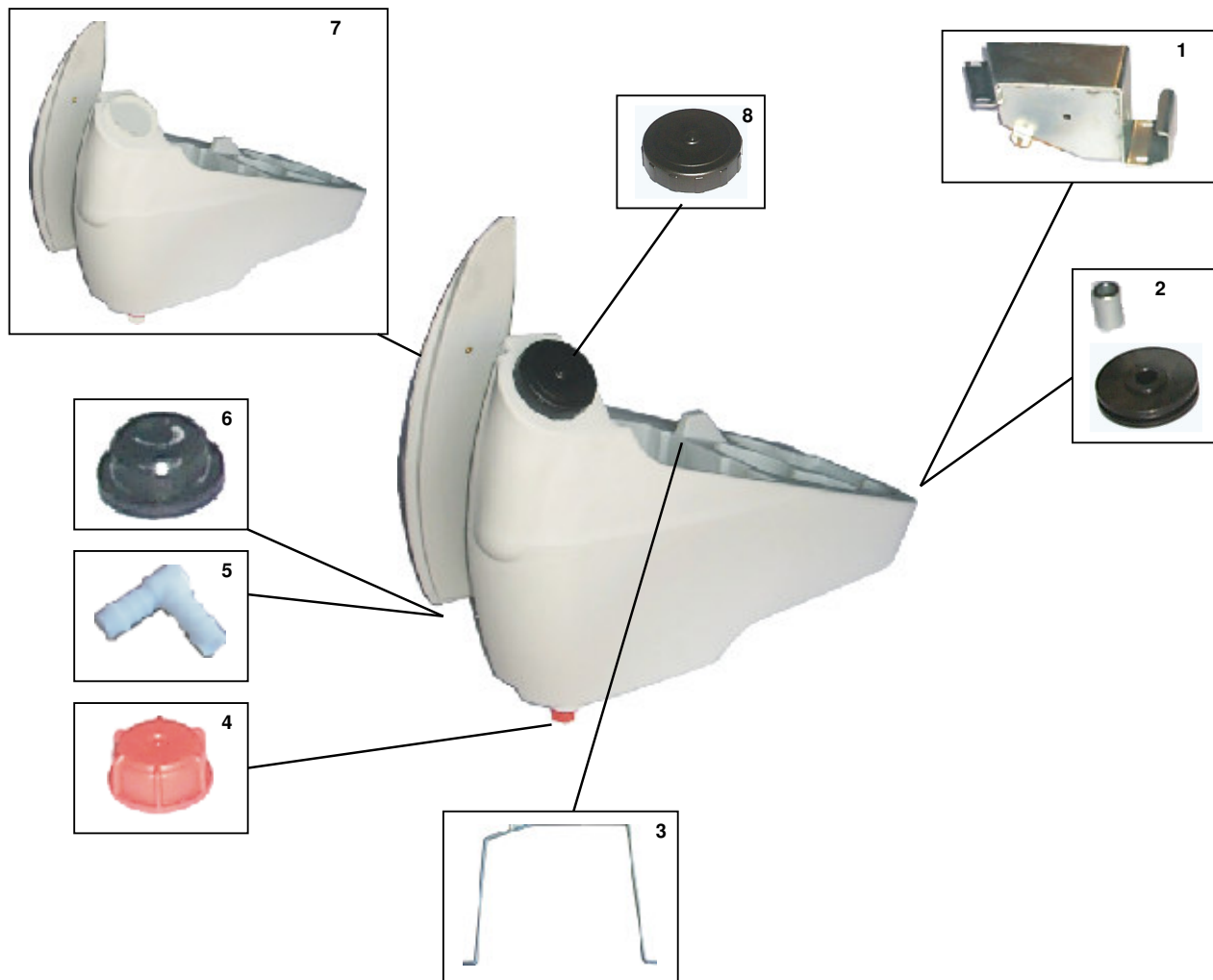


| Ref | Qtà | Code | Descrizione | Description | Descripcion | Benennung | Denomination |
|-----|-----|--------------|------------------|--------------|----------------|------------------|----------------|
| 1 | 1 | 70.03.01.001 | COPERCHIO | COVER | COUVERCLE | DECKEL | TAPA |
| 2 | 1 | 45.06.01.003 | GUARNIZIONE | GASKET | GARNITURE | DICHTUNG | JUNTA |
| 3 | 1 | 45.01.05.013 | ANELLO | RING | ANNEAU | RING | ANILLO |
| 4 | 1 | 20.01.05.006 | FILTRO | FILTER | FILTRE | FILTER | FILTRO |
| 5 | 1 | 58.01.22.011 | CONT. FILTRO | FILTER BOX | SUPPORT FILTRE | HALTERUNG FILTER | SOPORTE FILTRO |
| 6 | 1 | 40.04.02.012 | MOLLA | SPRING | RESSORT | FEDER | RESORTE |
| 7 | 1 | 45.05.01.009 | TUBO | PIPE | TUBE | ROHR | TUBO |
| 8 | 1 | 70.03.01.003 | TAPPO | PLUG | BOUCHON | DECKEL | TAPON |
| 9 | 1 | 45.10.08.001 | PORTA TAPPO | PLUG HOLDER | PORTE BOUCHON | DECHELGER | PORTA TAPON |
| 10 | 1 | 45.02.01.003 | SERBATOIO | TANK | RESERVOIR | TANK | TANQUE |
| 11 | 1 | 20.05.01.002 | FASCETTA | CLAMP | COLLIER | BRIDE | ABRAZADERA |
| 12 | 1 | 55.01.09.002 | SUPPORTO | SUPPORT | SUPPORT | HALTERUNG | SOPORTE |
| 13 | 1 | 20.01.04.006 | GUARNIZIONE | GASKET | GARNITURE | DICHTUNG | JUNTA |
| 14 | 1 | 58.01.06.015 | BOCCHETTA | OPENING | BUSE | dFFNUNG | BOQUILLA |
| 15 | 1 | 55.03.03.004 | COPERCHIO | COVER | COUVERCLE | DECKEL | TAPA |
| 16 | 1 | 40.02.05.073 | SUPPORTO | SUPPORT | SUPPORT | HALTERUNG | SOPORTE |
| 17 | 1 | 20.03.02.002 | MANIGLIA | HANDLE | POIGNEE | GRIFF | MANIJA |
| 18 | 1 | 70.03.01.006 | KIT GALLEGGIANTE | KIT FLOATING | KIT FLOTTANT | KIT SCHWIMM | KIT FLOTANTE |
| 19 | 1 | 70.03.01.007 | KIT GUARNIZIONE | KIT GASKET | KIT GARNITURE | KIT DICHTUNG | KIT JUNTA |
| 20 | 1 | 45.01.05.011 | TAPPO | PLUG | BOUCHON | DECKEL | TAPON |

2



Raccoon 2



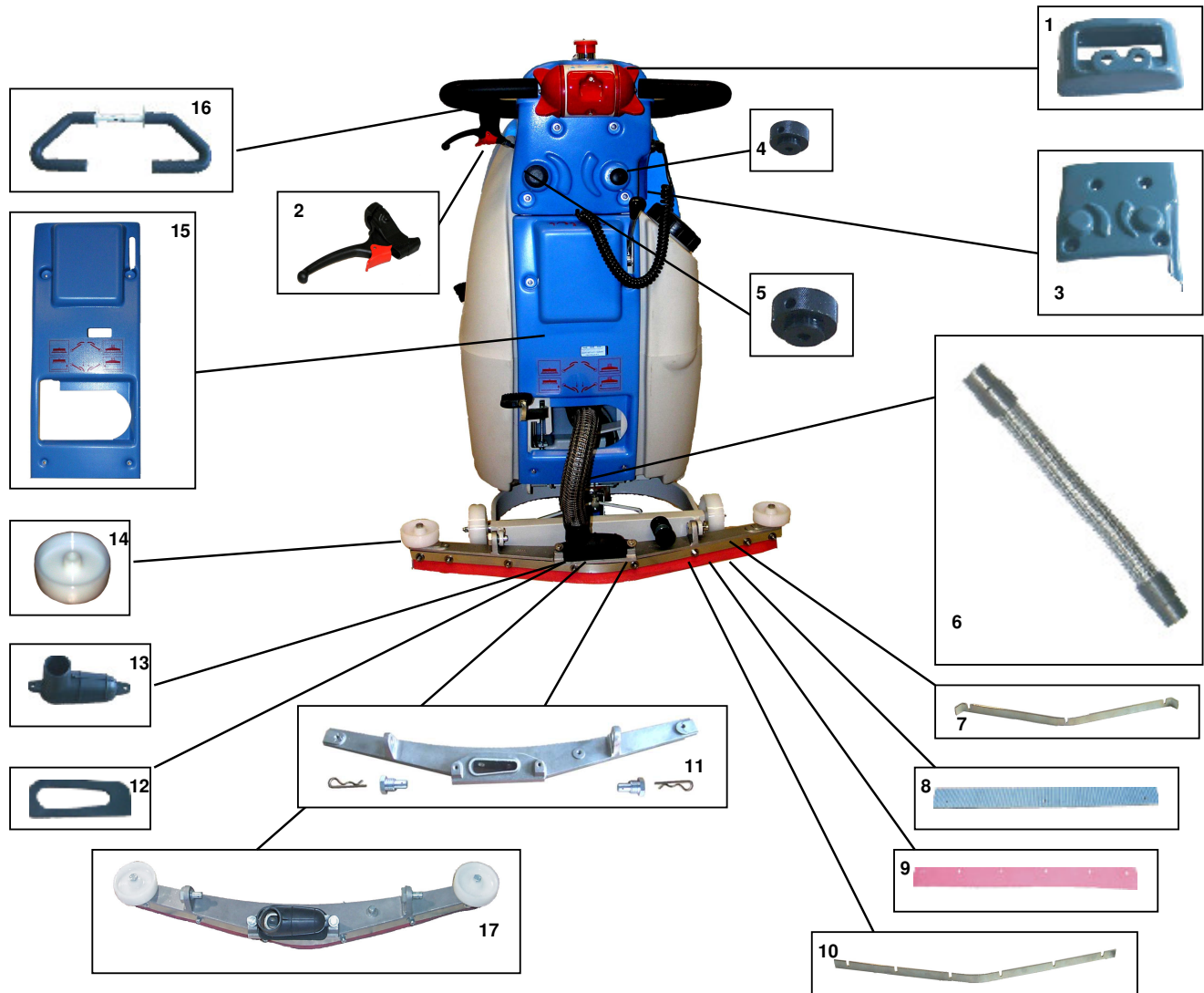
| Ref. | Q.ta | Code | Descrizione | Description | Descripción | Benennung | Denomination |
|------|------|--------------|-------------|-------------|-------------|----------------|--------------|
| 1 | 1 | 55.01.04.016 | SUPPORTO | SUPPORT | SUPPORT | HALTERUNG | SOPORTE |
| 2 | 1 | 45.05.05.002 | PULEGGIA | PULLEY | POULIE | RIEMENSCHLEIBE | POLEA |
| 3 | 1 | 55.01.04.036 | SUPPORTO | SUPPORT | SUPPORT | HALTERUNG | SOPORTE |
| 4 | 1 | 20.01.02.001 | TAPPO | PLUG | BOUCHON | DECKEL | TAPON |
| 5 | 1 | 35.12.04.007 | RACCORDO | FITTING | RACCORD | VERSCHRAUBUNG | EMPALME |
| 6 | 1 | 20.01.04.007 | GUARNIZIONE | GASKET | GARNITURE | DICHTUNG | JUNTA |
| 7 | 1 | 45.02.02.002 | SERBATOIO | TANK | RESERVOIR | TANK | TANQUE |
| 8 | 1 | 20.01.02.011 | TAPPO | PLUG | BOUCHON | DECKEL | TAPON |



Raccoon 2



3

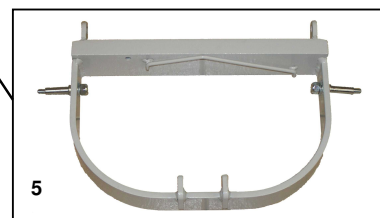
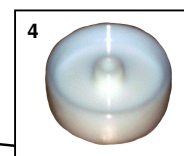
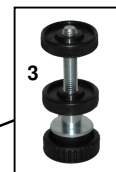
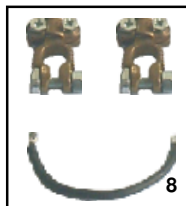


| Rif. | Q.ta | Code | Descrizione | Description | Description | Benennung | Denomination |
|------|------|--------------|-----------------|--------------|-----------------|-------------------|-------------------|
| 1 | 1 | 45.03.01.031 | COPERCHIO | COVER | COUVERCLE | DECKEL | TAPA |
| 2 | 1 | 15.01.09.013 | LEVA | LEVER | LEVIER | HEBEL | PALANCA |
| 3 | 1 | 45.03.01.033 | COPERCHIO | COVER | COUVERCLE | DECKEL | TAPA |
| 4 | 1 | 40.02.05.102 | MANOPOLA | KNOB | POIGNEE | DREHGRIF | EMPUñADURA |
| 5 | 1 | 40.02.05.103 | MANOPOLA | KNOB | POIGNEE | DREHGRIF | EMPUñADURA |
| 6 | 1 | 45.05.01.012 | TUBO | PIPE | TUBE | ROHR | TUBO |
| 7 | 1 | 40.01.01.129 | LAMA PREMIGOM. | BLADE | PLAQUETTE | LEISTE | LISTON |
| 8 | 1 | 45.06.04.003 | GOMMA ANTERIORE | FRONT RUBBER | BAVETTE AVANT | VORDERERSAUGGUM. | GOMA DELANTERA |
| 9 | 1 | 45.06.04.004 | GOMMA POSTER. | REAR RUBBER | BAVETTE ARRIERE | HINTERERSAUGGUMMI | GOMA TRASERA |
| 10 | 1 | 40.01.01.130 | LAMA PREMIGOM. | BLADE | PLAQUETTE | LEISTE | LISTON |
| 11 | 1 | 40.03.02.005 | TERGIPAVIMENTO | SQUEEGEE | SUCEUR | SAUGER | LIMPIAPAVIMENTO |
| 12 | 1 | 45.10.02.002 | GUARNIZIONE | GASKET | GARNITURE | DICHTUNG | JUNTA |
| 13 | 1 | 45.01.05.012 | RACCORDO | FITTING | RACCORD | VERSCHRAUBUNG | EMPALME |
| 14 | 2 | 15.01.04.013 | RUOTA | WHEEL | ROUE | RAD | RUEDA |
| 15 | 1 | 45.03.01.151 | COPERCHIO | COVER | COUVERCLE | DECKEL | TAPA |
| 16 | 1 | 58.01.05.018 | MANUBRIO | HANDLE BAR | TIMON | HANDGRIF | MANILLAR |
| 17 | 1 | 70.01.01.042 | SQUEEGE COMP. | COMP.SQUEEGE | SUCEUR COMPLET | SAUGER COMPLETT | LIMPIA PAV. COMP. |

4



Racoon 2



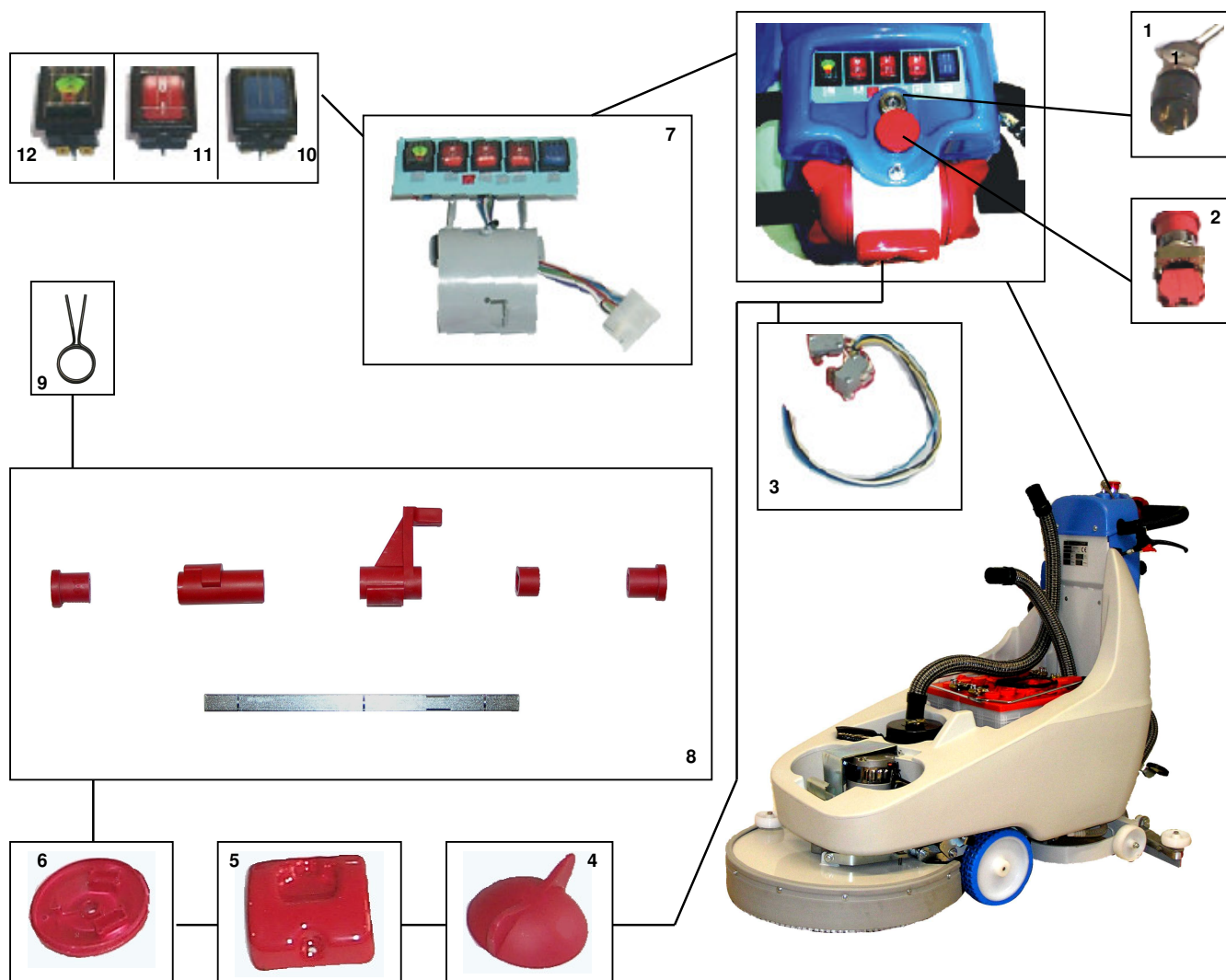
| Rif. | Q.ta | Code | Descrizione | Description | Descripcion | Benennung | Denomination |
|------|------|--------------|---------------|---------------|-----------------|------------------|-------------------|
| 1 | 1 | 45.05.01.012 | TUBO | PIPE | TUBE | ROHR | TUBO |
| 2 | 1 | 20.05.01.002 | FASCETTA | CLAMP | COLLIER | BRIDE | ABRAZADERA |
| 3 | 1 | 70.01.01.062 | REGISTRO | ADJUSTER | REGISTRE | DRUCKREGULIERUNG | REGULADOR |
| 4 | 2 | 15.01.04.038 | RUOTA | WHEEL | ROUE | RAD | RUEDA |
| 5 | 1 | 55.01.04.053 | SUP. TERGI | SUPPORT SQUEE | SUPPORT SACEUR | HALTERUNG SAUGER | SOPORTE LIMPIADOR |
| 6 | 2 | 10.07.03.006 | BATTERIA | BATTERIES | BATTERIES | BATTERIE | BATERIAS |
| 7 | 1 | 10.01.05.001 | MOTORE ASPIR. | SUCTION MOTOR | MOTEUR D'ASPIR. | SAUGMOTOR | MOTOR DE ASPIR. |
| 8 | 1 | 70.02.03.002 | CAVO | CABLE | CABLE | KABEL | CABLE |
| 9 | 1 | 70.02.03.003 | CAVO | CABLE | CABLE | KABEL | CABLE |



Raccoon 2

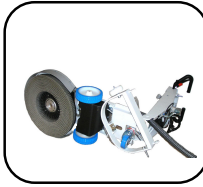


5

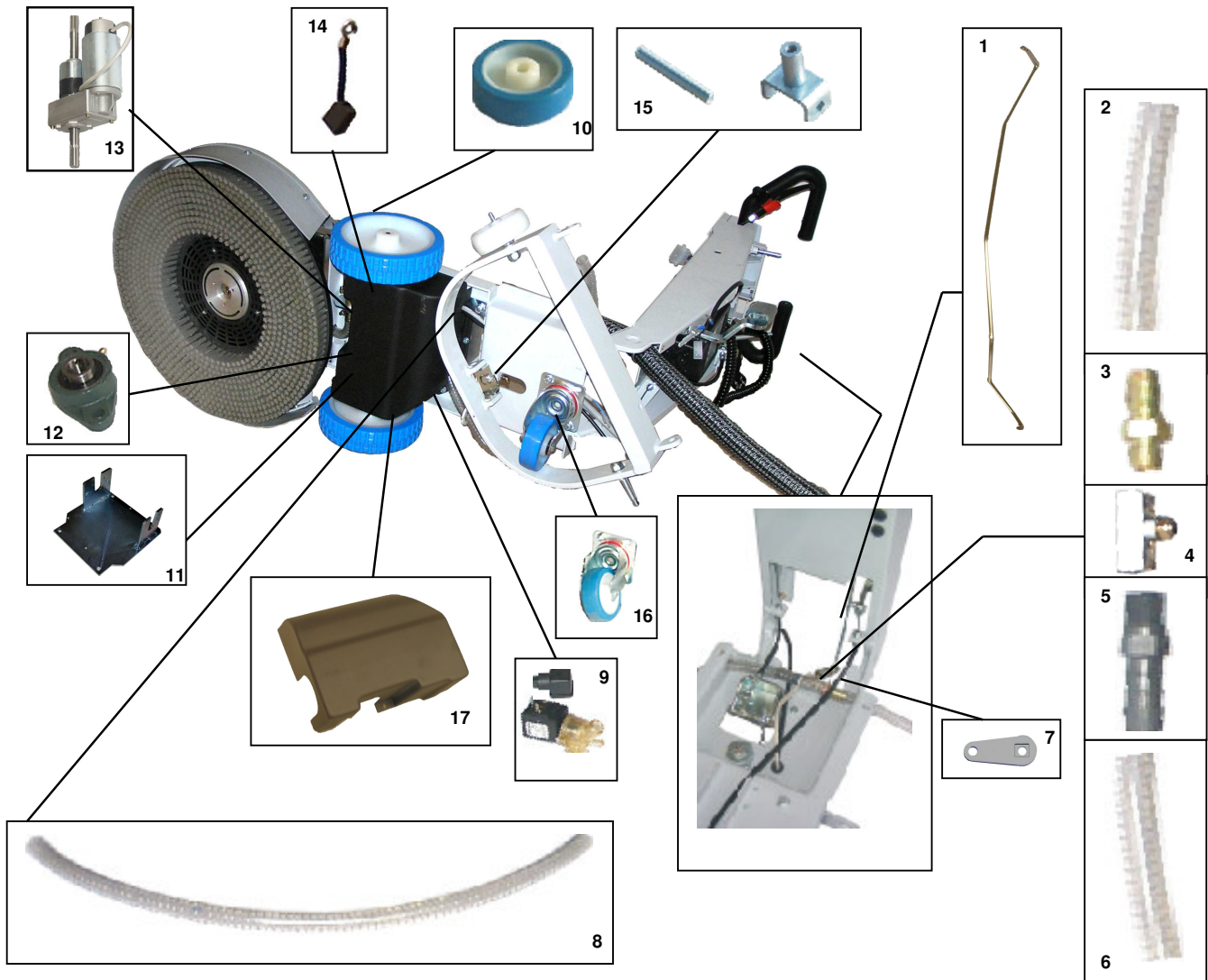


| Rif. | Q.ta | Code | Descrizione | Description | Descripcion | Benennung | Denomination |
|------|------|--------------|-----------------|---------------------|--------------------|------------------|--------------------|
| 1 | 1 | 10.05.23.001 | CHIAVE | KEY | CLE | SCHLOSSEL | LLAVE |
| 2 | 1 | 10.02.03.003 | INTER. DI SICUR | SAFETY SWITCH | INTER.PROTECTION | SCHALTER | INTER DE SEGURIDAD |
| 3 | 4 | 10.02.01.001 | MICROINTERR. | MICROSWITCH | MICRO INTERRUPTEUR | MICROSCHALFER | MICROINTERRUPTOR |
| 4 | 2 | 45.01.05.023 | MANOPOLA | KNOB | POIGNEE | DREHGRIFF | EMPUFIADURA |
| 5 | 1 | 45.03.01.038 | PULSANTE | BUTTON | BOUTON | KNOPF | BOTON |
| 6 | 2 | 45.01.05.024 | COPERCHIO | COVER | COUVERCLE | DECKEL | TAPA |
| 7 | 1 | 58.01.05.013 | CORPO COMANDO | CONTROL BODY | CORPS DE COMMANDE | ANTRIEB | CUERPO DE MANDO |
| 8 | 1 | 70.01.03.006 | CAMMA | CAM | CAME | NOCKEN | CAMA |
| 9 | 1 | 40.04.02.022 | MOLLA | SPRING | RESSORT | FEDER | RESORTE |
| 10 | 1 | 10.02.02.013 | INTERRUTTORE | SWITCH | INTERRUPTEUR | SCHALTER | INTERRUPTOR |
| 11 | 3 | 10.02.02.012 | INTERRUTTORE | SWITCH | INTERRUPTEUR | SCHALTER | INTERRUPTOR |
| 12 | 1 | 10.06.05.002 | SEGNALE BATT. | BATT. DESGARGE IND. | TEMOIN DE CHARGE | BATTERIE-ANZEIGE | SEFIAL BATERIAS |

6



Raccoon 2



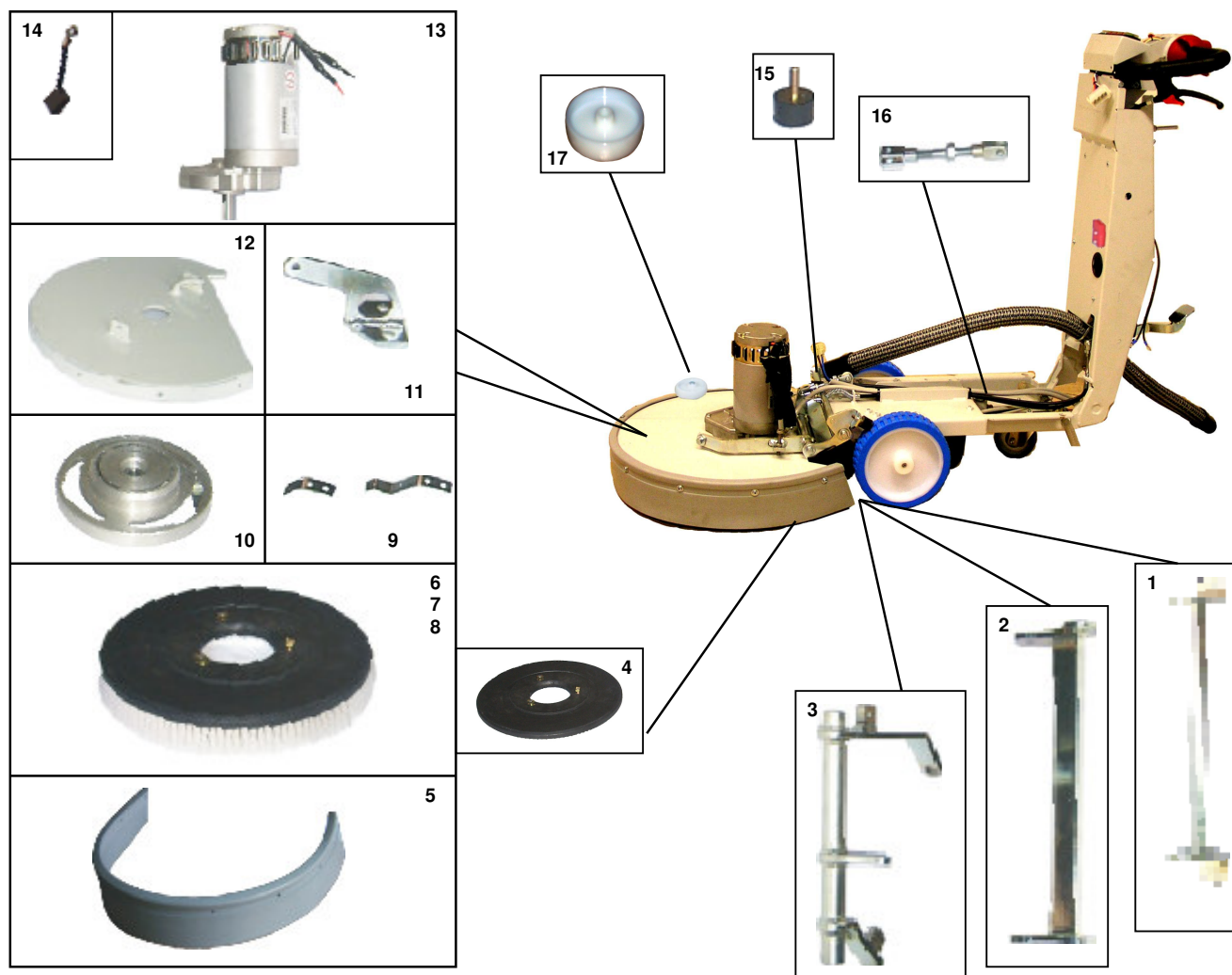
| Rif. | Q.tà | Code | Descrizione | Description | Descripçion | Benennung | Denomination |
|------|------|--------------|-----------------|----------------|-------------------|-------------------|----------------------|
| 1 | 1 | 40.02.05.165 | TIRANTE | TIE ROD | TIGE | SPANNSTANGE | TIRANTE |
| 2 | 1 | 45.05.01.011 | TUBO | PIPE | TUBE | ROHR | TUBO |
| 3 | 1 | 35.12.04.008 | PORTAGOMMA | CONNECTOR | RACCORD | SCHLAUCHANSCHLUSS | EMPALME TUBO DE GOMA |
| 4 | 1 | 31.13.04.003 | RUBINETTO | COCK | ROBINET | WASSERHAHN | GRIFO |
| 5 | 1 | 35.12.04.003 | PORTAGOMMA | CONNECTOR | RACCORD | SCHLAUCHANSCHLUSS | EMPALME TUBO DE GOMA |
| 6 | 1 | 45.05.01.014 | TUBO | PIPE | TUBE | ROHR | TUBO |
| 7 | 1 | 55.01.09.011 | LEVA | LEVER | LEVIER | HEBEL | PALANCA |
| 8 | 1 | 45.05.01.013 | TUBO | PIPE | TUBE | ROHR | TUBO |
| 9 | 1 | 10.05.12.003 | ELETTRORVALVOLA | SOLENOID VALVE | ELECTROVANNE | MAGNETVENTIL | ELECTROVALVULA |
| 10 | 2 | 15.01.04.010 | RUOTA | WHEEL | ROUE | RAD | RUEDA |
| 11 | 1 | 55.01.04.028 | SUPPORTO | SUPPORT | SUPPORT | HALTERUNG | SOPORTE |
| 12 | 3 | 15.01.07.007 | SUPPORTO | SUPPORT | SUPPORT | HALTERUNG | SOPORTE |
| 13 | 1 | 15.02.01.002 | GRUPPO TRAZIONE | TRACTION UNIT | GROUP DE TRACTION | MOTORISIERUNG | EQUIPO DE TRACCION |
| 14 | 4 | 45.10.05.003 | SPAZZOLA MOTORE | BRUSH MOTOR | CHARBON MOTEUR | KOHLEBORSTE | ESCOBILLA MOTOR |
| 15 | 1 | 70.01.03.002 | SUPPORTO | SUPPORT | SUPPORT | HALTERUNG | SOPORTE |
| 16 | 1 | 15.01.04.002 | RUOTA | WHELL | ROVE | RAD | RUEDA |
| 17 | 1 | 45.03.01.152 | COPERCHIO | COVER | COUVERCLE | DECKEL | TAPA |



Raccoon 2



7

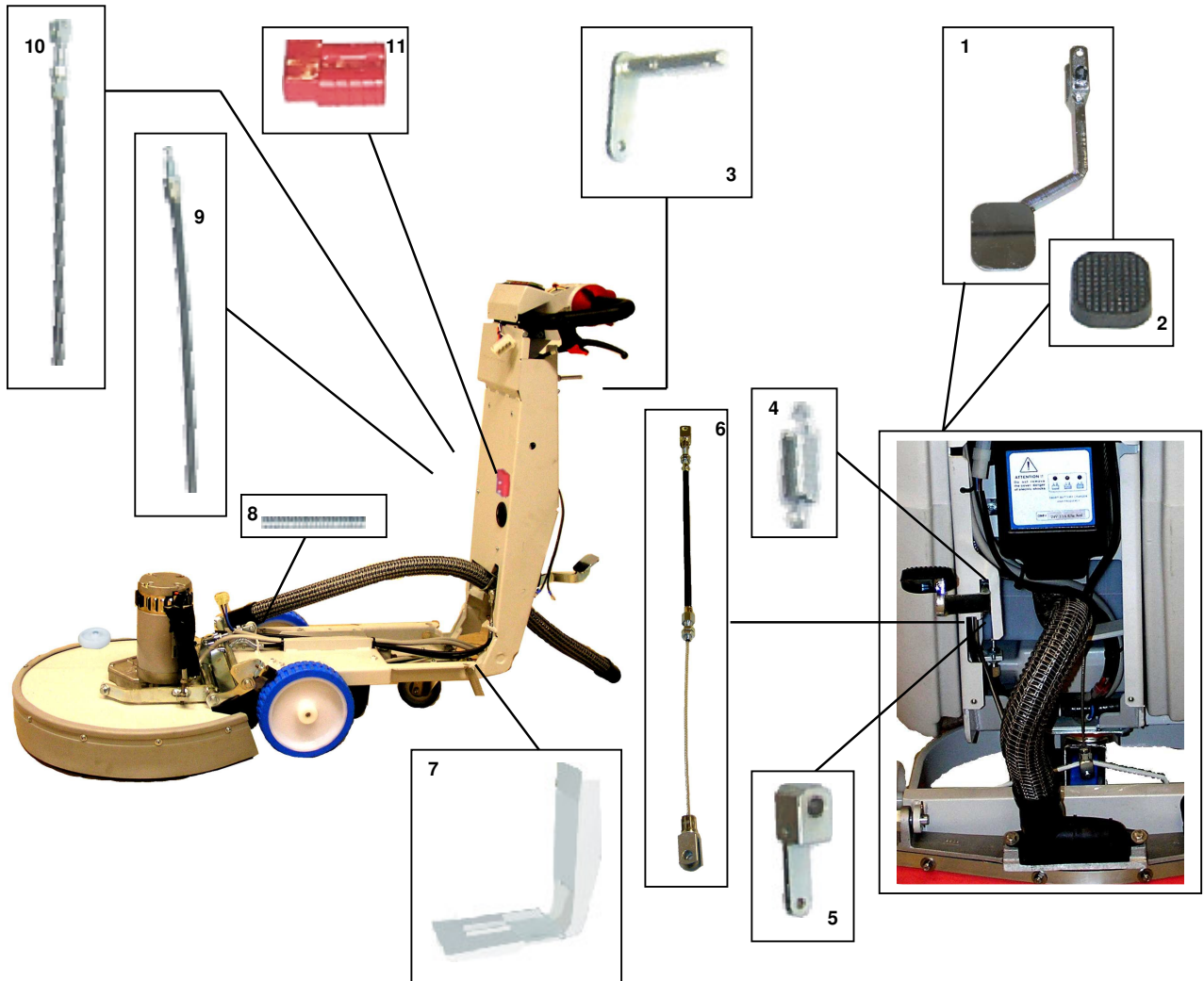


| Ref. | Q.tà | Code | Descrizione | Description | Descripcion | Benennung | Denomination |
|------|------|--------------|----------------|----------------|----------------|----------------|------------------|
| 1 | 1 | 55.01.05.014 | SUPPORTO | SUPPORT | SUPPORT | HALTERUNG | SOPORTE |
| 2 | 1 | 40.01.01.155 | SUPPORTO | SUPPORT | SUPPORT | HALTERUNG | SOPORTE |
| 3 | 1 | 55.01.04.025 | SUPPORTO | SUPPORT | SUPPORT | HALTERUNG | SOPORTE |
| 4 | 1 | 58.01.04.011 | TRASCINATORE | PAD HOLDER | DISQUE GUIDE | SCHLEPPER | ARRASTRARSADOR |
| 5 | 1 | 45.06.03.009 | PARASPRUZZI | SPLASH GUARD | BAVETTE | SPRITZGUMMI | PARASALPICADURAS |
| 6 | 1 | 58.01.04.010 | SPAZZOLA LIGHT | BRUSH LIGHT | BROSSE LIGHT | BORSTE LIGHT | CEPILLO SUAVE |
| 7 | 1 | 58.01.04.003 | SPAZ.STANDARD | BRUSH STANDARD | BROSSE NORMAL | BORSTE | CEPILLO NORMAL |
| 8 | 1 | 58.01.04.009 | SPAZZOLA | BRUSH STRONG | BROSSE FORT | BORSTE STARK | CEPILLO FUERTE |
| 9 | 1 | 40.04.02.014 | MOLLA | SPRING | RESSORT | FEDER | RESORTE |
| 10 | 1 | 50.03.01.001 | PULEGGIA | PULLEY | POULIE | RIEMENSCHLEIBE | POLEA |
| 11 | 1 | 55.01.04.022 | SUPPORTO | SUPPORT | SUPPORT | HALTERUNG | SOPORTE |
| 12 | 1 | 55.01.04.019 | BASAMENTO | BASE | EMBASE | GESTELL | BANCADA |
| 13 | 1 | 15.02.01.003 | MOTORE | MOTOR | MOTEUR | MOTOR | MOTOR |
| 14 | 2 | 45.10.05.002 | SPAZZOLA | CARBON BRUSH | CHARBON MOTEUR | KOHLEBORSTE | ESCOBILLA MOTOR |
| 15 | 2 | 20.01.03.004 | GOMMA FRENO | BRAKE RUBBER | BAVETTE DE | BREMSEGUMMI | GOMA DE FRENAJE |
| 16 | 1 | 70.01.03.003 | REGISTRO | ADJUSTER | REGISTRE | REGISTER | REGULADOR |
| 17 | 1 | 15.01.04.013 | RUOTA | WHEEL | ROUE | RAD | RUEDA |

8



Raccoon 2

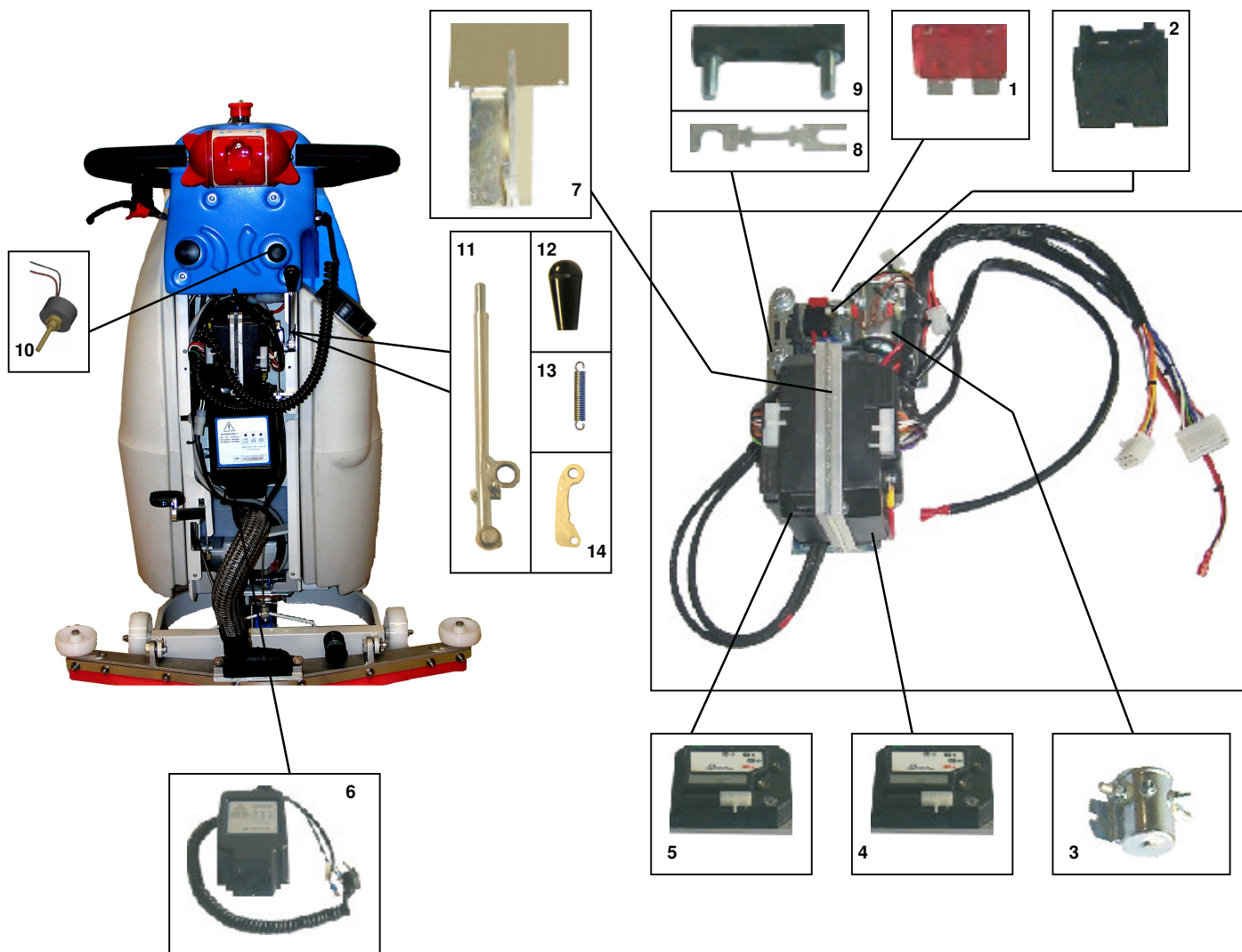


| Ref. | Q.tà | Code | Descrizione | Description | Descripcion | Benennung | Denomination |
|------|------|--------------|-----------------|--------------|----------------------|------------|---------------|
| 1 | 1 | 55.01.05.012 | PEDALE | PEDAL | PEDALE | PEDAL | PEDAL |
| 2 | 2 | 20.03.04.001 | PEDALE IN GOMMA | RUBBER PEDAL | PEDALE EN CAOUTCHOUC | GUMMIPEDAL | PEDAL DE GOMA |
| 3 | 2 | 55.01.09.001 | LEVA | LEVER | LEVIER | HEBEL | PALANCA |
| 4 | 1 | 40.04.02.016 | MOLLA | SPRING | RESSORT | FEDER | RESORTE |
| 5 | 2 | 55.01.05.003 | LEVA | LEVER | LEVIER | HEBEL | PALANCA |
| 6 | 1 | 15.02.06.021 | CAVO | CABLE | CABLE | KABEL | CABLE |
| 7 | 1 | 55.01.01.077 | TELAIO | FRAME | CHASSIS | RAHMEN | BASTIDOR |
| 8 | 1 | 40.04.02.015 | MOLLA | SPRING | RESSORT | FEDER | RESORTE |
| 9 | 1 | 15.02.06.016 | CAVO | CABLE | CABLE | KABEL | CABLE |
| 10 | 1 | 15.02.06.009 | CAVO | CABLE | CABLE | KABEL | CABLE |
| 11 | 1 | 10.05.05.021 | SPINA | SPRING PIN | FOURCHETTE | SPANNSTIFT | PASADOR |



Raccoon 2

9



| Rif. | Q.tà | Code | Descrizione | Description | Descriccion | Benennung | Denomination |
|------|------|--------------|-----------------|---------------------|---------------------|-----------------|------------------|
| 1 | 1 | 10.05.01.001 | FUSIBILE | FUSE | FUSIBLE | SCHMELZ | FUSIBILE |
| 2 | 1 | 10.05.01.002 | PORTA FUSIBILE | FUSE BOX | PORTE FUSIBLE | SCHMELZ TRAGER | PORTA FUSIBILE |
| 3 | 1 | 10.05.18.003 | TELERUTTORE | REMOTE CONTR.SWITCH | TELERUPTEUR | SCHOTZ | TELEINTERRUPTOR |
| 4 | 1 | 10.06.02.007 | SCHEDA TRAZIONE | TRACTION CARD | VARIAT. DU TRACTION | TRACTIONKARTE | CHOPPER TRACCION |
| 5 | 1 | 10.06.02.006 | SCHEDA CHOPPER | CHOPPER CARD | VARIATEUR ELECTR. | ELEKTRONIKKARTE | FICHA-CHOPPER |
| 6 | 1 | 10.08.01.011 | CARICA BATTERIA | CHARGER | CHARGE BATTERIE | BATTERE LADUNG | CARGADOR |
| 7 | 1 | 55.01.04.035 | SUPPORTO | SUPPORT | SUPPORT | HALTERUNG | SOPORTE |
| 8 | 1 | 10.05.01.010 | FUSIBILE | FUSE | FUSIBLE | SCHMELZ | FUSIBILE |
| 9 | 1 | 10.05.01.013 | PORTA FUSIBILE | FUSE BOX | PORTE FUSIBLE | SCHMELZ TRAGER | PORTA FUSIBILE |
| 10 | 1 | 10.05.27.001 | POTENZIOMETRO | POTENTIOMETER | POTENTIOMETRE | POTENTIOMETER | POTENTIOMETRO |
| 11 | 1 | 55.01.01.075 | LEVA | LEVER | LEVIER | HEBEL | PALANCA |
| 12 | 1 | 20.01.03.005 | MANOPOLA | KNOB | POIGNEE | DREHGRIF | EMPUñADURA |
| 13 | 1 | 40.04.02.020 | MOLLA | SPRING | RESSORT | FEDER | RESORTE |
| 14 | 1 | 40.01.02.104 | LEVA | LEVER | LEVIER | HEBEL | PALANCA |



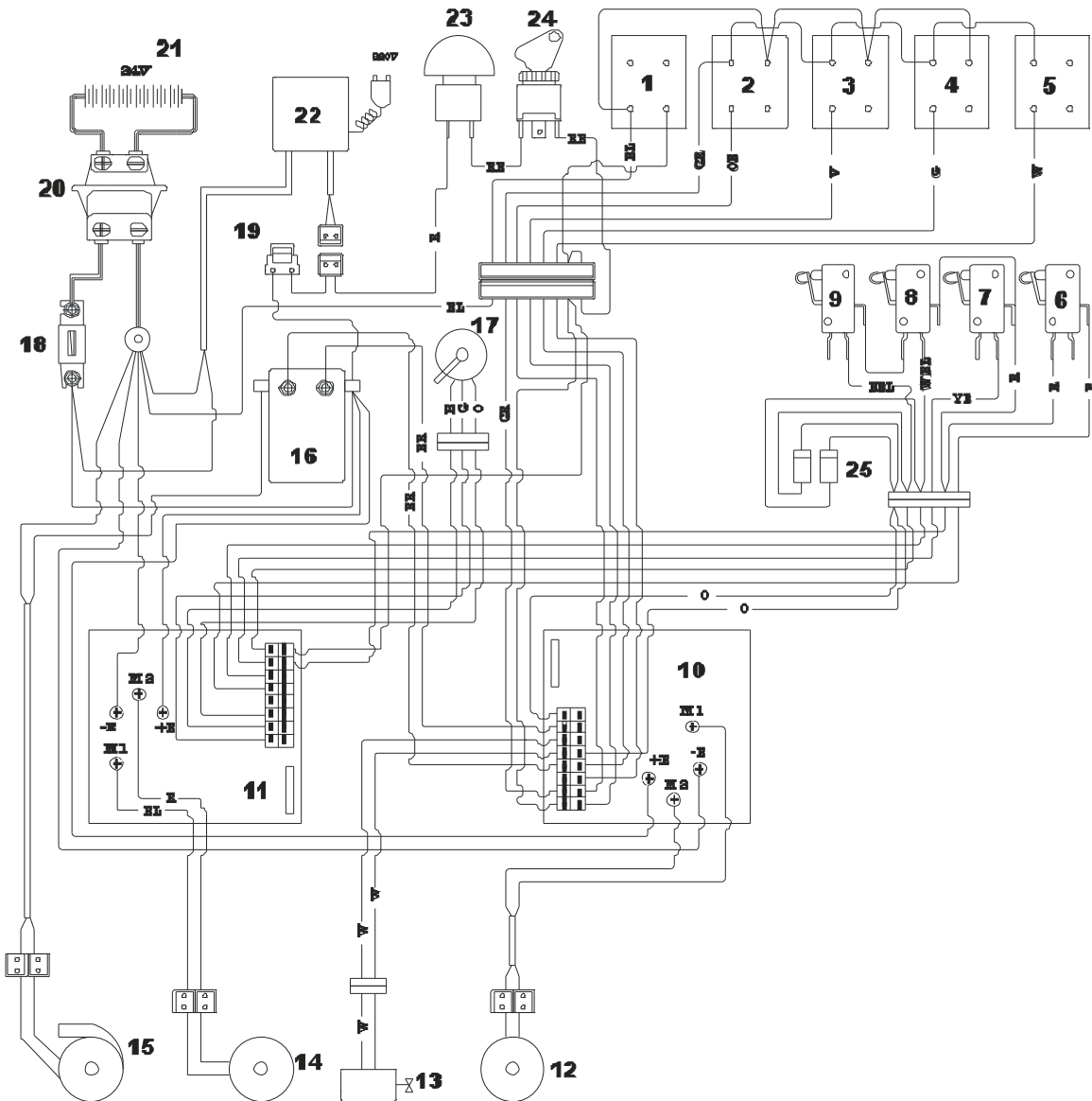
IMPIANTO
ELETTRICO

ELECTRIC
SYSTEM

INSTALLATION
ELECTRIQUE

ELEKTRISHE
ANLAGE

ISTALLACION
ELECTRICA





Raccoon 2



11

WIRE DIAGRAM COMPONENTS ELECTRIC SYSTEM PAG.10

| Ref. | Q.tà | Code | Descrizione | Description | Descripcion | Benennung | Denomination |
|------|------|--------------|-------------------|--------------------------|---------------------------|------------------|-----------------------|
| 1 | 1 | 10.06.05.002 | SEGNALE BATT. | BATT.DISGARGE IND. | TEMOIN DE CHARGE | BATTERIE-ANZEIGE | SEFIAL BATERIAS |
| 2 | 1 | 10.02.02.012 | INTERRUTTORE | SWITCH | INTERRUPTEUR | SCHALTER | INTERRUPTOR |
| 3 | 1 | 10.02.02.012 | INTERRUTTORE | SWITCH | INTERRUPTEUR | SCHALTER | INTERRUPTOR |
| 4 | 1 | 10.02.02.012 | INTERRUTTORE | SWITCH | INTERRUPTEUR | SCHALTER | INTERRUPTOR |
| 5 | 1 | 10.02.02.013 | INTERRUTTORE | SWITCH | INTERRUPTEUR | SCHALTER | INTERRUPTOR |
| 6 | 1 | 10.02.01.001 | MICROINTERRUTTORI | MICROSWITCH | MICRO INTERRUPTEUR | MIKROSCHALTER | MICROINTERRUPTOR |
| 7 | 1 | 10.02.01.001 | MICROINTERRUTTORI | MICROSWITCH | MICRO INTERRUPTEUR | MIKROSCHALTER | MICROINTERRUPTOR |
| 8 | 1 | 10.02.01.001 | MICROINTERRUTTORI | MICROSWITCH | MICRO INTERRUPTEUR | MIKROSCHALTER | MICROINTERRUPTOR |
| 9 | 1 | 10.02.01.001 | MICROINTERRUTTORI | MICROSWITCH | MICRO INTERRUPTEUR | MIKROSCHALTER | MICROINTERRUPTOR |
| 10 | 1 | 10.06.02.007 | SCHEDA CHOPPER | CHOPPER CARD | VARIATEUR ELECTRONIQUE | ELETRONIKKARTE | FICHA-CHOPPER |
| 11 | 1 | 10.06.02.006 | SCHEDA CHOPPER | CHOPPER CARD | VARIATEUR ELECTRONIQUE | ELETRONIKKARTE | FICHA-CHOPPER |
| 12 | 1 | 15.02.01.002 | MOTORE | MOTOR | MOTEUR | MOTOR | MOTOR |
| 13 | 1 | 10.05.12.001 | ELETTRIVALVOLA | SOLENOID VALVE | ELECTROVANNE | MAGNETVENTIL | ELECTROVALVULA |
| 14 | 1 | 15.02.01.002 | MOTORE TRAZIONE | MOTOR | MOTEUR | MOTOR | MOTOR |
| 15 | 1 | 10.01.05.001 | MOTORE ASPIR. | SUCTION MOTOR | MOTEUR D'ASPIR | SAUGMOTOR | MOTOR DE ASPIR. |
| 16 | 1 | 10.05.18.003 | TELERUTTORE | REMOTE CONTROL SWITCH | TELERUPTEUR | SCHOTZ | TELEINTERRUPTOR |
| 17 | 1 | 10.05.27.001 | POTENZIOMETRO | POTENTIOMETER | POTENTIOMETRE | POTENTIOMETER | POTENTIOMETRO |
| 18 | 1 | 10.05.01.001 | FUSIBILE | FUSE | FUSIBLE | SCHMELZ | FUSIBLE |
| 19 | 1 | 10.05.01.002 | FUSIBILE | FUSE | FUSIBLE | SCHMELZ | FUSIBLE |
| 20 | 2 | 10.05.05.021 | SPINA | SPRING PIN | FORCHETTE | SPANNSTIFT | PASADOR |
| 21 | 2 | 10.07.03.006 | BATTERIA | BATTERY | BATTERIE | BATTERIE | BATERIA |
| 22 | 1 | 10.08.01.011 | CARICA BATTERIA | CHARGER | CHARGE BATTERIE | BATTERIE LADUNG | CARGADOR |
| 23 | 1 | 10.02.03.003 | INTER. DI SICUR. | SAFETY SWITCH | INTER.PROTECTION | SCHALTER | INTER.DE SEGURIDAD |
| 24 | 1 | 10.05.23.001 | CHIAVE | KEY | CLE | SCHLOSSEL | LLAVE |
| 25 | 2 | 10.02.02.015 | DIODO | DIODE | DIODE | DIODEN | DIODO |

| | COLORE CAVI | COLOUR CABLES | COLOUR CABLES | FARBKABEL | COLORE CABLE |
|------|--------------|---------------|---------------|--------------|-----------------|
| REF. | COLORE | COLOUR | COULEUR | FARBE | COLORES |
| R | ROSSO | RED | ROUGE | ROT | ROJO |
| N | NERO | BLACK | NOIRE | SCHWARZ | NEGRO |
| V | VIOLA | VIOLET | VIOLETTE | VIOLETT | VIOLETA |
| G | GRIGIO | GREY | GRIS | GRAU | GRIS |
| W | BIANCO | WHITE | BLANCHE | WEISS | BLANCO |
| O | ARANCIO | ORANGE | ORANGE | ORANGE | NARANJA |
| P | ROSA | PINK | ROSE | ROSA | ROSA |
| BL | BLU | BLEU | BLEU | BLAU | AZUL |
| BR | MARRONE | BRAWN | MARRON | BRAUN | AZUL/ROJO |
| RB | ROSSO/NERO | RED/BLACK | ROUGE/NOIRE | ROT/SCHWARZ | ROJO/NEGRO |
| GR | GRIGIO/ROSSO | GREY/RED | GRIS/ROUGE | GRAU/ROT | GRIS/ROJO |
| OB | ARANCIO/BLU | ORANGE/BLEU | ORANGE/BLEU | ORANGE/BLAU | NARANJA/AZUL |
| YB | GIALLO/NERO | YELLOW/BLACK | JAUNE/NOIRE | GELB/SCHWARZ | TAMARILLO/NEGRO |